

A diagram showing a green circular background. In the center, there is a rectangular component with a light green top section and a darker green bottom section. The dimensions of the rectangular component are labeled as 16mm (width) and 25mm (height).

| Flip colour | Lid colour | Band colour |
|-------------|------------|-------------|
| | | |
| | | |
| Yellow | | Yellow |
| Orange | | Orange |
| Pink | | Pink |
| Red | | Red |
| Light green | | Light green |
| Dark green | | Dark green |
| Light blue | | Light blue |
| Medium blue | | Medium blue |
| Dark blue | | Dark blue |
| Purple | | Purple |
| Black | | Black |

Technical drawing of a container with the following dimensions:

- Top lid: 45mm
- Upper body: 15mm
- Orange band: 50mm (width), 20mm (height)
- Lower body: 35mm (width), 30mm (height)

Diagram of a 1000 ml measuring cup showing dimensions for label placement:

- Top Lid:** 45mm wide.
- Upper Body:** 15mm high.
- Orange Band:** 50mm wide, 20mm high.
- Lower Body:** 35mm wide, 30mm high.

SIDE 2

A diagram of a 100 ml beaker. The beaker is white with a green lid. An orange label is wrapped around the middle of the beaker. The label has a dashed rectangular border. The text "60mm" is written horizontally across the top of the dashed border, and "20mm" is written vertically along the right side of the dashed border.

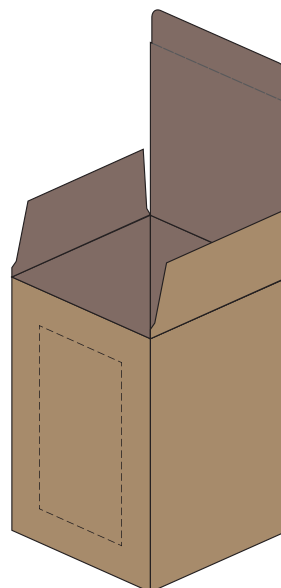
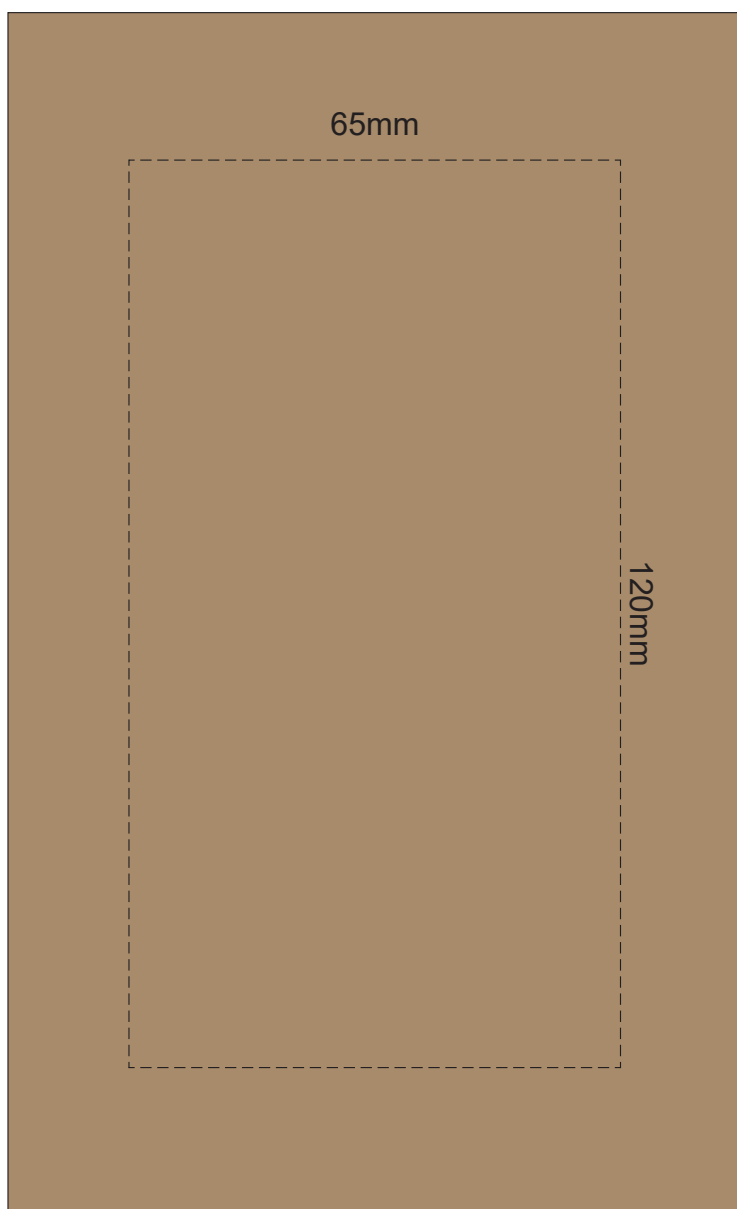
SIDE 1



SIDE 2

[illegible]

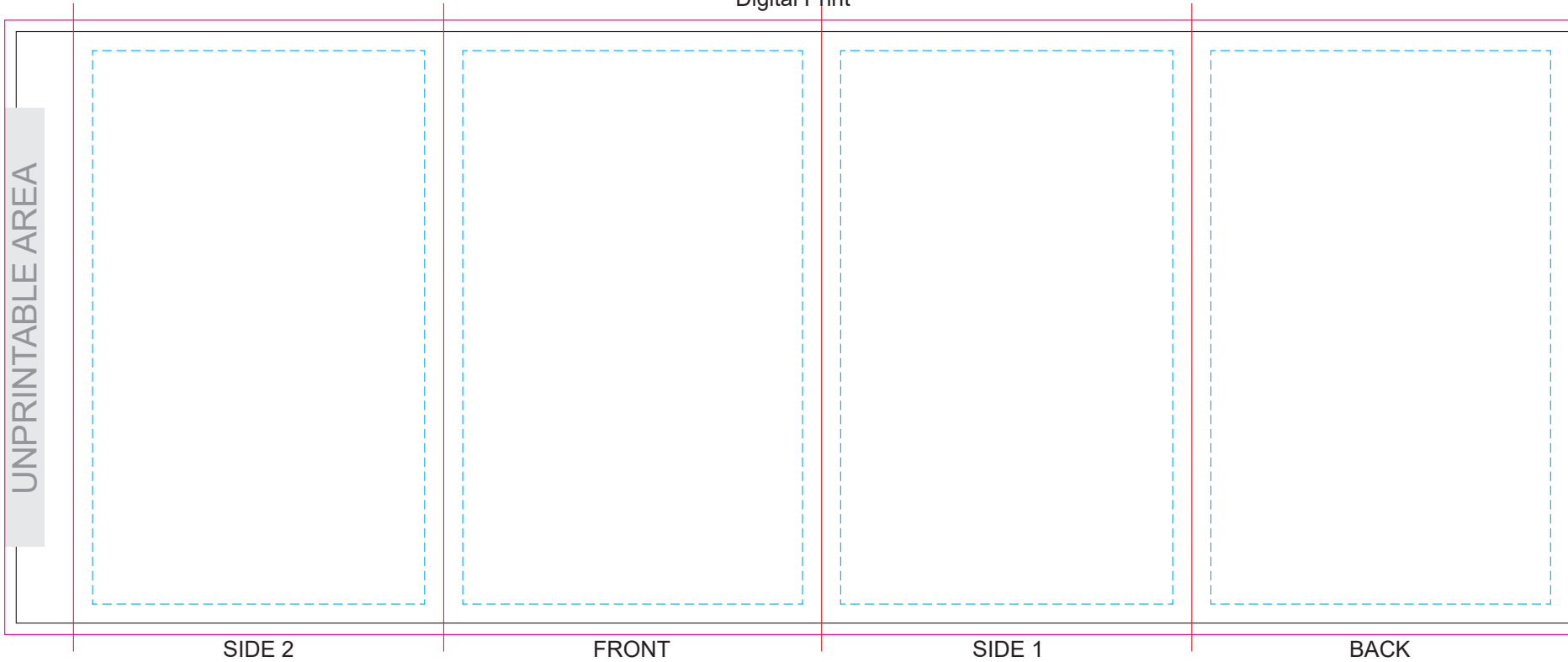
100% of Actual Size
Digital Packaging Print
FRONT



Artwork will be printed directly onto the product via CMYK printing (no white),
colours will not be vibrant due to white ink not being available for this process.

GIFT BOX SLEEVE

60% of Actual Size
Digital Print



Blue Line = The SIGNIFICANT PRINT AREA
(Keep all critical images & text within this box)

Black Line = Maximum print area

Pink Line = Bleed off to here

Red Line = Fold Line

